



## PRODUCTION MANAGEMENT MODULE

Whether you're looking to increase the productivity of your existing card personalization equipment OR a simple way of managing your card issuance program, CIM's machine independent PowerCard Integration™ software is the most cost effective open interface application on the market. From a single point on your network you can now manage card data files, personalization job allocation, job prioritization (or single card), workflow management, error tracking and reporting.

PowerCard Integration™ offers a total control of the card production program in a bureau and, even though it can support personalization with other industry brands\*, it is optimized to work with CIM's Pro Series or Premium Series equipment. It allows for output optimization regardless of job/batch size and:

- Reduces requirement for manual revision of cards.
- Reduces card delivery time to customers
- Increases average card output rates of your equipment.
- Provides a full range of card program management and issuance tools and more...



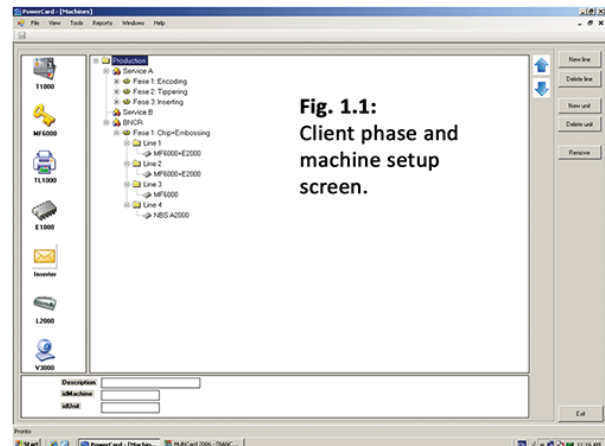
### Flexible Bureau Production Management

From a single GUI you can import production files (input files generated from data preparation) in any file format or from any database type. This single interface allows you to convert all file types into personalization batches on a common "sql" platform. With all data on a common platform, you can now arrange all the card personalization elements in any manner that leads to the most optimal production output for your product mix. This is *ideal for bureaus that receive data from different Banks or from different sources by product type.*

\*May require some development and support from the manufacturer.

### A Tool for Optimized Card Personalization

Optimized personalization depends on proper separation of bottleneck elements such as chip encoding and color printing. With the use of simple drag and drop commands, PowerCard Integration™ allows you to quickly design the production workflow to suit the output capacity of each of your machines or modules. Your production environment can be configured as modules, machines, lines or clusters to which personalization phases (emboss, indent, encode, etc) are assigned. With PowerCard Integration™ you have true control of every step of the card personalization process.



**Fig. 1.1:**  
Client phase and machine setup screen.

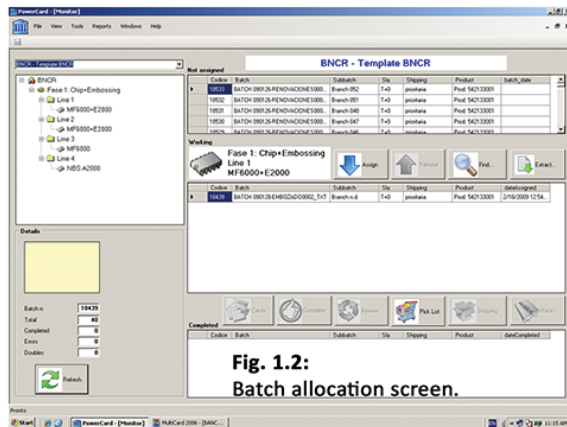
### Complete Card Job Control

Job lot composition need not be an arduous manual process. PowerCard Integration™ allows you to set import file rules and batch allocation filters so that the size and content of job batches can be dynamically controlled to suit your production process or client expectations. For example, SLA filtering can be achieved so that your most pressing jobs are always produced first. In fact, you can even extract a single card as a rush job from a large production batch!



CIM USA Inc  
10813 NW 30<sup>th</sup> St, Suite 108, Miami, FL 33172  
Tel. 305-639-3040 Fax 305-639-3060 email: info-usa@cimusainc.com  
www.cimusainc.com | www.cimgsa.com

# PRODUCTION MANAGEMENT MODULE



**Fig. 1.2:**  
Batch allocation screen.

## Error Management and Continuous Improvement

PowerCard Integration™ allows access to real-time information about the personalization operations. Batch progress, errors, duplicates, machine utilization, operator performance and more can be monitored and logged for quality improvement and auditing. Isolate individual machines or production lines to view performance progress and make adjustments in real-time to keep production efficiency at a maximum. When combined with a versatile personalization client ( such as MultiCard™) your production auditing and error management can be derived down to the individual process level.

## Comprehensive reports

PowerCard Integration™ compiles information up to the last printed card. You can access all the production information filtered by user, affinity, machines, job and more. You can also generate useful reports regarding your card production the moment you need it, allowing you to make quick and intelligent decisions for your business. Choose from the menu a standard report or make your own personalized report with the information that you need.

## From Data Preparation to Delivery

PowerCard Integration™ provides you with the tools to finish the job. Picking, dispatch and mailing documentation and labels are all automatically generated with each production batch. Each of these forms is customized upon installation and for bureaus with more than one customer. PowerCard Integration™ has the smarts to identify and generated the fulfillment documentation that is relevant in each case.

## Enhanced Security Option

PowerCard Integration™ also offers increased security options for data transmission using the “Secure M3” features:

- Information security management
- Double key encryption
- Complete access reports

## Benefits of using PowerCard Integration

For personalizers of plastic cards, PowerCard Integration™ offers:

- More production in less time
- More cards without errors and smaller need of re-production
- Detailed reports that will help to make better decisions
- Efficient search option to easily find individual records.
- Inventory and audit for products and job lots.
- Prepares your system for EMV migration.
- Generates all documents for distribution
- .Net environment that allows easy updates.

## A 360 Solution: Design, Implementation and Support

CIM USA is dedicated to providing excellence in support for its solutions. We have a an expansive global network of dedicated partners that are trained and experience to guarantee your operational continuity. Additionally, our 360 approach to servicing our client’s needs means we can assist with operational planning, implementation, production design, integration and development. CIM USA does not only offer machines – we offer solutions.